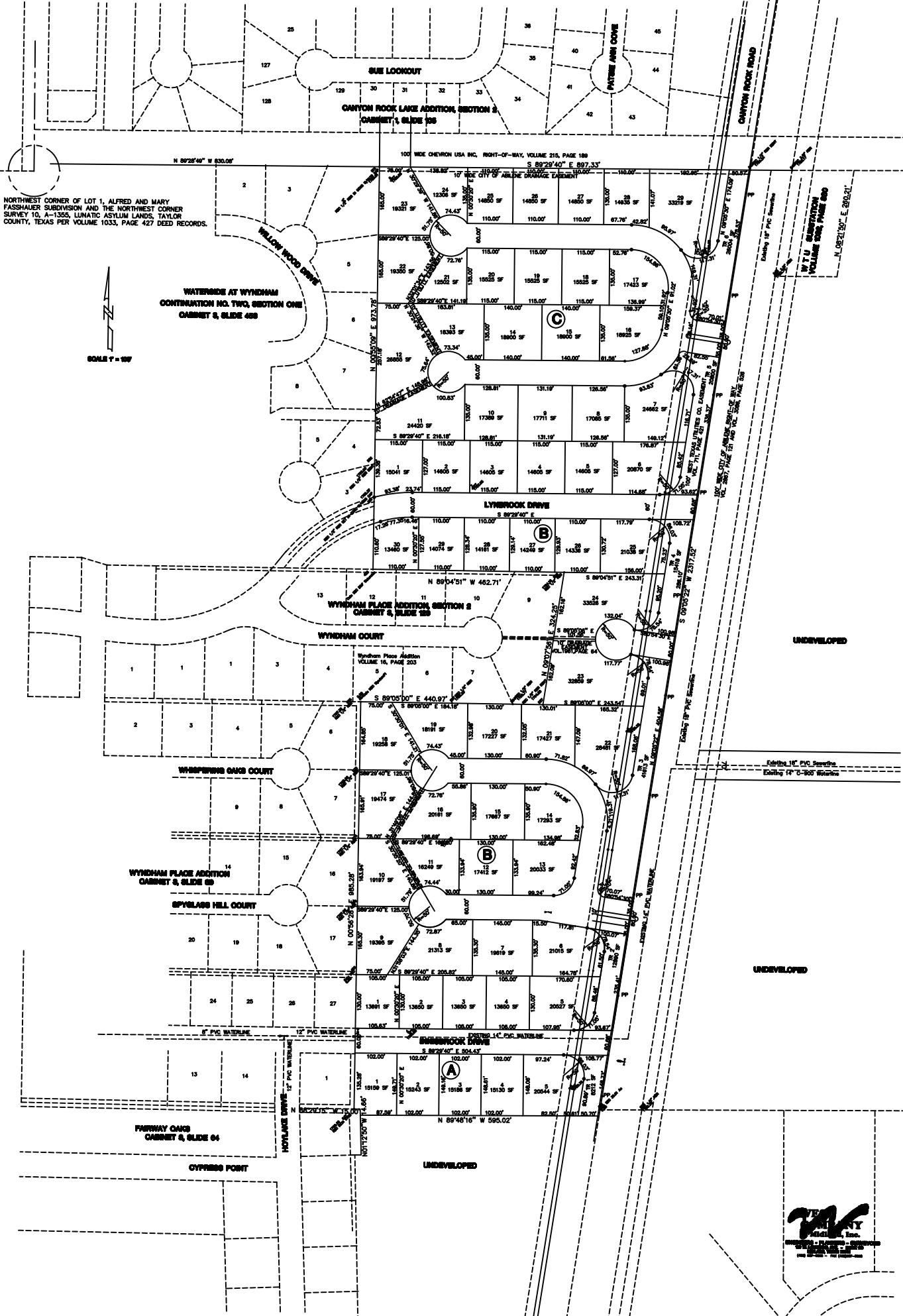


THE VILLAGES OF ABILENE

BEING A 35.888 ACRE TRACT OF LAND OUT OF SURVEY 10, A-1355, LUNATIC ASYLUM LANDS, TAYLOR COUNTY, TEXAS, AN ADDITION TO THE CITY OF ABILENE.



NORTHWEST CORNER OF LOT 1, ALFRED AND MARY FASSHAUER SUBDIVISION AND THE NORTHWEST CORNER SURVEY 10, A-1355, LUNATIC ASYLUM LANDS, TAYLOR COUNTY, TEXAS PER VOLUME 1033, PAGE 427 DEED RECORDS.



WATERBINE AT WYNDHAM CONTINUATION NO. TWO, SECTION ONE CABINET 8, SLIDE 488

BLUE LOOKOUT
CANYON ROCK LAKE ADDITION, SECTION 2 CABINET 1, SLIDE 108

WYNDHAM PLACE ADDITION, SECTION 2 CABINET 8, SLIDE 88

WYNDHAM COURT

WYNDHAM PLACE ADDITION CABINET 8, SLIDE 88

SPYGLASS HILL COURT

FARWAY GOLF CABINET 8, SLIDE 84

CYPRESS POINT

UNDEVELOPED

UNDEVELOPED

UNDEVELOPED

